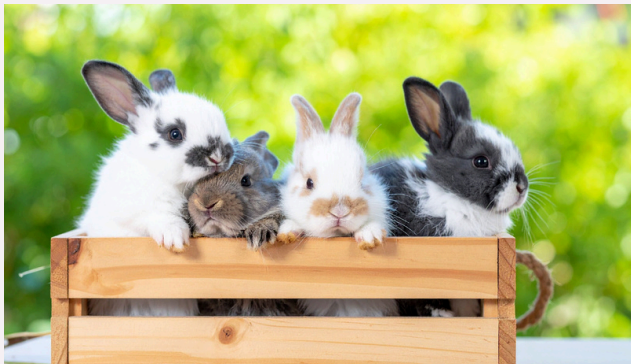




Spring reminds us that fresh starts are always within reach—bringing warmer days, brighter moments, and exciting events just ahead!



*\*WCSI has obtained and retains a photo release for every individual featured in our newsletter.*



In this issue:

- About Us
- ASD Awareness Month
- Out and About
- Upcoming Events
- Employee Spotlight
- Employment Opportunities
- Resources

## APRIL IS ASD AWARENESS MONTH

Autism, or autism spectrum disorder (ASD), refers to a broad range of conditions characterized by challenges with social skills, repetitive behaviors, speech and nonverbal communication.

According to the Centers for Disease Control, autism affects an estimated 1 in 36 children and 1 in 45 adults in the United States today. We know that there is not one type of autism, but many.

Autism looks different for everyone, and each person with autism has a distinct set of strengths and challenges. Some autistic people can speak, while others are nonverbal or minimally verbal and communicate in other ways. Some have intellectual disabilities, while some do not. Some require significant support in their daily lives, while others need less support and, in some cases, live entirely independently.

Learn more on how you can participate in World Autism Month on Pages 3 & 4



**WCSI**  
Westmoreland  
Casemanagement  
and Supports Inc.

## WCSI MISSION STATEMENT

We are dedicated to working in partnership with all individuals impacted by Intellectual and Developmental Disabilities and Behavioral Health Challenges through their connection to essential services, personal empowerment, and promotion of wellness.

## WCSI VISION STATEMENT

WCSI will be the leader in integrating people into the community through Recovery, Wellness, and Positive Approaches to live a full and renewed life.

## WCSI CORE VALUES

COMMITMENT  
QUALITY  
INTEGRITY  
ACCOUNTABILITY  
RESPECT

## WHO WE ARE: SERVING THE COMMUNITY FOR 30 YEARS!

Established in 1994, WCSI provides a range of Behavioral Health, Intellectual and Developmental Disability, and Early Intervention services to the residents of Westmoreland County.

WCSI is dedicated to having a positive impact on the community it is so fortunate to serve. Our philosophy is straightforward: We provide services to any eligible individual or family, doing everything possible to ensure the best possible outcomes.

This means that our involvement in the community is not defined only by funded services but rather by a holistic response to individual, family, and community needs.

We meet you where you are:  
In any stage of your life.  
In your home or in the community.

We care about your whole person, and we are committed to connecting you with the resources to enable you to thrive in all aspects of your life. Our services are individualized according to your identified needs and preferences.



# APRIL IS NATIONAL AUTISM AWARENESS MONTH

## AUTISM SPECTRUM DISORDER

is a range of conditions affecting social skills, repetitive behaviors, speech, and nonverbal communication.

**APRIL IS NATIONAL AUTISM AWARENESS MONTH,** with celebrations to understand this disorder. Here are some facts to learn what autism is and how you can help those who have it.

## AWARENESS

- Most obvious signs of autism appear between two and three years old.
- Children may fail to respond to their name or have a reduced interest in people.
- Around one third of people with autism stay nonverbal their whole life.
- Seizures, ADHD, and anxiety frequently accompany autism.



## ACTION

- Developmental delay screenings should occur at nine months.
- Autism Spectrum Disorder screenings should be at 18 months.
- Child psychologists and neurologists can help detect autism in your child.

## INCLUSION & ACCEPTANCE

- Children with Autism don't get the same sense of inclusion in schools as other children, making them feel excluded and alienated.
- Adults with autism often have trouble getting a job.
- Social inclusion is having access to education, health care, and services.
- The Convention on the Rights of Persons with Disabilities states those with autism have the right to be included in their community.

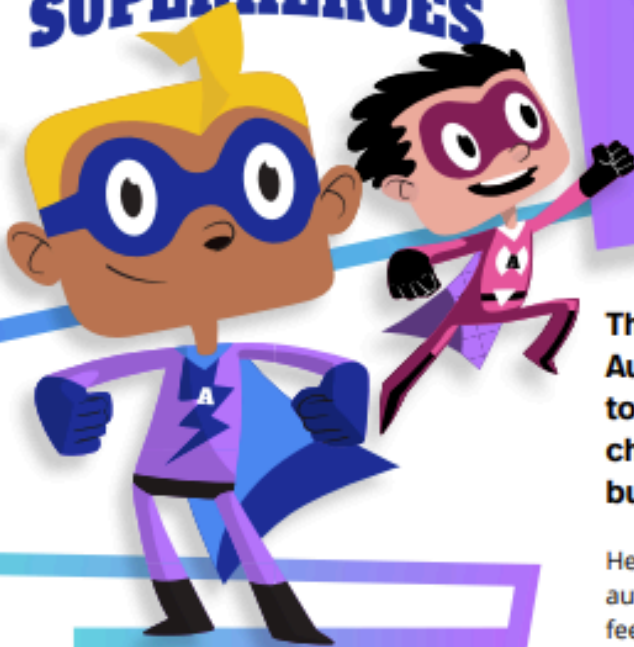


**USE THE HASHTAG #LIGHTITUPBLUE ACROSS SOCIAL MEDIA** platforms to share your experiences and help light the world in blue this April!



autism speaks

## INCLUSION SUPERHEROES



# CALLING ALL SUPER HEROES!

**This World Autism Month and throughout the year, Autism Speaks is urging schools, teachers and kids to recognize their own potential as superheroes by championing inclusivity and standing up against bullying for a stronger, more accepting world.**

Helping students understand the unique characteristics of their autistic classmates and the importance of making all children feel included can make all the difference. Establishing a sense of camaraderie and inclusion in your school can foster a healthy and supportive atmosphere for all.

Studies show that more  
**more than 2/3 of  
autistic students**  
experience bullying - let's  
change that!

### **Pledge to become an hero for difference and inclusion!**

By rallying together as a community, embracing diversity, taking steps to combat bullying and promoting inclusion, we will create an environment where every student feels valued, accepted, and empowered to thrive.

Use our downloadable pledge pages for kids to color and customize. Collect the pledges and post on your school social media page with #autismspeaks or #redefinepossible during April. Share your school support and inspire others!

*Find out more at:*  
[autismspeaks.org/WAM](http://autismspeaks.org/WAM)



**"I PLEDGE to be a hero for inclusion and respect people of all abilities."**

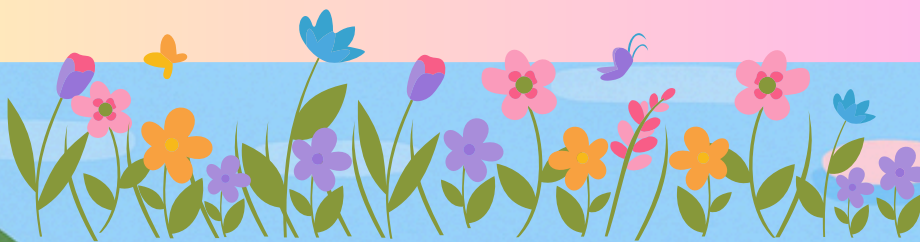
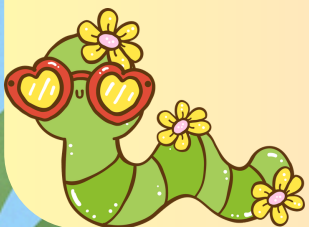
**POST YOUR PLEDGE to become an inclusion ally**  
for people with autism during the month of April!

# Out and About



## **WCSI's Community Impact: A Look Back at last few months of 2026!**

WCSI has been very busy actively connecting and engaging with the community through a variety of events for all ages! From job fairs and health fairs to family-friendly celebrations, and educational events, WCSI has certainly been out and about!



# Community Career Fairs

In the month of March, WCSI employees have had the chance to participate in job fairs at Live Casino and attend the Career Connections Fair at PennWest University. These opportunities have allowed us to engage with the community, share the incredible benefits WCSI provides, as well as discuss job opportunities and our mission. We have also connected individuals with the resources we have to offer. We eagerly anticipate upcoming career fairs and outreach events and look forward to promoting the wonderful aspects of WCSI within the community! WCSI Representatives below are Coty Campbell (SCO Quality Specialist), Lauren Hussar (EISC Lead), and Stephany Slaughter (HR Recruitment and Outreach Assistant)



# WCSI EVENT

## Cabin Fever Bingo!

Our Cabin Fever Bingo event was a wonderful success, bringing together 45 attendees for a fun, welcoming, and Valentine's-themed celebration designed especially for our consumers. The WCSI Conference Center was decorated to create a bright, festive atmosphere, and the energy in the room made the day feel truly special.

### **Community Support and Generous Donations**

We were incredibly grateful for the outpouring of support from local businesses that donated prizes. Their generosity helped us offer an exciting selection of giveaways that everyone enjoyed. A heartfelt

thank-you to:

- Technimark
- DeLallo's
- Tropical Smoothie
- Lincoln Lanes
- Kamin Science Center
- Shop 'n Save

...and many others who contributed. Your support helped make the day memorable for all who attended.

### **Appreciation for Our Team and Partners**

This event would not have been possible without the dedication and teamwork of so many individuals for spreading the word and attending the event with your clients. We want to extend a sincere thank-you to:

- Becky C., Melanie, and Becky M. for helping create such a warm and welcoming environment
  - Zack and Matt for assisting with transportation
  - Angie for managing the registration table with care and enthusiasm
- Your efforts helped everything run smoothly and made the day enjoyable for everyone.

### **Looking Ahead**

We are already excited about planning our next Cabin Fever Bingo event. With the continued support of our community, local businesses, and staff, we hope to welcome even more consumers in the future and continue building events that bring people together.



# Community Job Fairs

In the last few months, WCSI employees have had the chance to participate in job fairs at Live Casino and attend the Career Connections Fair at Penn State Fayette. These opportunities allow us to engage with the community, share the incredible benefits WCSI provides, as well as discuss job opportunities and our mission. We have also connected individuals with the resources we offer. We eagerly anticipate upcoming job fairs and outreach events and look forward to promoting the wonderful aspects of WCSI within the community!

WCSI Representatives below are Jen Armstrong-Schaefer (SC Training Supervisor), Jennifer Sano (ID Manager), and Stephany Slaughter (HR Recruitment and Outreach Assistant)



# Community Fairs Job

In the last few months, WCSI employees have had the chance to participate in job fairs at Live Casino. This opportunity allows us to engage with the community, share the incredible benefits WCSI provides, as well as discuss job opportunities and our mission. We have also connected individuals with the resources we offer. We eagerly anticipate upcoming job fair events at Live! and look forward to promoting the wonderful aspects of WCSI within the community!

WCSI Representatives below are Jen Armstrong-Schaefer (SC Training Supervisor), Zack Hough (TCM Supervisor), and Stephany Slaughter (HR Assistant and Outreach Assistant).





# WCSI EVENT

## December Recovery Event: Winter Wellness Wonderland

In December, our Greensburg and New Kensington offices transformed into a Winter Wellness Wonderland as they welcomed Behavioral Health clients for a series of festive, recovery-focused celebrations. Adult events were held on December 19, followed by child gatherings on December 30 at both locations. The theme emphasized connection, creativity, and emotional well-being during the holiday season. Guests took part in a variety of hands-on activities designed to inspire reflection, joy, and community:

**Good Tidings Garland** – Participants shared positive messages and affirmations, creating a collaborative garland full of encouragement.

**Mindful Ornament Decorating** – A calming, creative activity that invited everyone to express themselves through personalized holiday ornaments.

**Warm Wishes Exchange** – A simple but meaningful opportunity to offer and receive supportive notes for the season ahead.

**Hot Cocoa & Coping Skills** – A cozy station pairing warm drinks with conversations and tools for maintaining wellness during winter months.

**Holiday Vision/Joy Boards** – Participants crafted visual boards to highlight their hopes, goals, and sources of joy for the coming year.

The New Ken office created a fun Jeopardy game for both age groups to participate in. The children's event in Greensburg added an extra layer of fun with games featuring fake snowballs, bringing plenty of laughter and energy to the day.

Across both offices and all age groups, the Winter Wellness Wonderland events were filled with creativity, connection, and genuine enjoyment. Everyone left with smiles, new memories, and a renewed sense of support as we closed out the year.



# Upcoming Events



WCSI is excited to participate in a variety of community gatherings this season. We look forward to connecting with our community, sharing resources, and creating meaningful experiences for all who attend.

Stay tuned for more details—we can't wait to see you there!



# Community Event

## Wings of Hope



AT LAURELVILLE PRESENTS:



# EASTER PARTY

SPECIAL NEEDS CHILDREN AND THEIR  
FAMILIES

AGES:5-18

APRIL 6TH 6:00-7:00

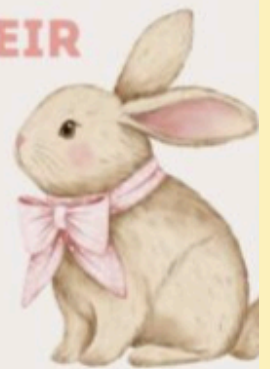
LOCATION:GYM

TO

REGISTER:INSPIRE.ACHIEVE.DREAM@GMAIL.COM

941 LAURELVILLE LANE MOUNT PLEASANT PA 15666

LAURELVILLE.ORG



# Community Event



Westmoreland County Community

## Baby Shower

*Expecting a baby? Recently had one? Join us!*

This free community baby shower is just for Westmoreland County families who are expecting or have young children (up to 3 months of age).

**Saturday, April 11, 2026**

**11:30 AM – 1:30 PM**

GREENSBURG HEMPFIELD  
AREA LIBRARY



237 South Pennsylvania Ave  
Greensburg, PA 15601

**SCAN ME**



Reserve your spot!

<https://bit.ly/hsibabyshower>



# Community Event



**THURSDAY, AUGUST 6, 2026**

**6:30PM - 9:30PM**

**FREE ADMISSION**

Join us in showing appreciation to our local emergency heroes!

Learn more about our community's mental health, drug and alcohol resources, local businesses, and more!

For questions call Jamie Schmidt 724-850-2824

Vendor Letter



Sponsorship Form



- **FOOD TRUCKS**
- **KIDS CORNER**
- **BIKE RAFFLE**



- **Stage Performances**
- **Raffle Baskets**
- **Firework display**

*Hempfield Park - 220 Forbes Trail Road Greensburg, PA 15601*

# WCSI Event

Westmoreland Case  
Management and Supports

# CLOTHING GIVEAWAY

Sponsored by the Student Assistance Program



**APRIL 20 & 21, 2026**  
**2:00-6:30 PM**

134 Industrial Park Road, Greensburg PA  
Located in the Conference Center

\*Please note that all clothing is first come first serve and sizes are not guaranteed

# WCSI Event

WESTMORELAND  
CASEMANAGEMENT AND  
SUPPORTS, INC. PRESENTS

THIS WELLNESS  
EXPERIENCE WILL BRING  
PEOPLE AND CARING  
ORGANIZATIONS  
TOGETHER TO HELP  
SUPPORT, STRENGTHEN,  
AND EMPOWER  
INDIVIDUALS AND  
FAMILIES

## *The 2<sup>nd</sup> Annual Pause and Play*

A WELLNESS EXPERIENCE

JOIN US FOR A PICNIC IN THE PARK!

*Date: Friday, July 31st, 2026*

Time: 1PM-4PM

Location: Twin Lakes Pavillion 7 and  
Activity Center 20

### ATTENDEE REGISTRATION!

REGISTRATION IS FREE!

PLEASE REGISTER PRIOR TO JULY 1ST, 2026.

REGISTRATION INCLUDES TICKETS FOR LIGHT  
REFRESHMENTS

FOR QUESTIONS PLEASE CALL  
724-610-7312 OR EMAIL  
OUTREACH@WCSI.ORG



OBTAIN RESOURCES AND  
COMMUNITY SUPPORT  
SERVICES, ENJOY LIGHT  
REFRESHMENTS, MUSIC,  
THERAPUTIC ACTIVITES AND  
SO MUCH MORE



SCAN THE QR CODE  
TO REGISTER TODAY!

# Vendor Information for Pause and Play

RESOURCE  
TABLES  
WANTED!

WESTMORELAND  
CASEMANAGEMENT AND  
SUPPORTS, INC. PRESENTS

WE WOULD LOVE TO  
HAVE YOU AT OUR 2ND  
ANNUAL PAUSE AND  
PLAY EVENT TO  
PROVIDE FREE AND  
MEANINGFUL  
RESOURCES TO OUR  
COMMUNITY.

## The 2<sup>nd</sup> Annual Pause and Play A WELLNESS EXPERIENCE

JOIN US FOR A PICNIC IN THE PARK!

*Date: Friday, July 31st, 2026*

Time: 1PM-4PM

Vendor Set Up at 12 PM

Location: Twin Lakes Pavillion 7 and Activity  
Center 20

### PRICING FOR EVENT

VENDOR REGISTRATION FEE IS \$100. DEADLINE FOR SIGN-UPS IS MONDAY, JUNE 8, 2026.

#### ALL REGISTRATIONS WILL INCLUDE:

- VENDOR SPACE FOR A TABLE, TENT, AND CHAIRS
  - WE KINDLY REQUEST THAT EACH ORGANIZATION ATTENDING BRING THEIR OWN TENT, TABLE, AND CHAIRS
- EACH VENDOR'S COMPANY NAME WILL BE ADDED TO THE EVENT'S T-SHIRTS
  - A T-SHIRT WILL BE PROVIDED FOR 2 VENDORS. ADDITIONAL SHIRTS CAN BE PURCHASED.
- A GOODIE BAG WITH TICKETS FOR REFRESHMENTS WILL BE PROVIDED FOR EACH VENDOR REPRESENTATIVE THE DAY OF THE EVENT

PLEASE MAIL A CHECK MADE OUT TO WESTMORELAND CASEMANAGEMENT AND SUPPORTS, INC.

ALL CHECKS ARE DUE BY MONDAY, JUNE 15, 2026

MAILING ADDRESS: 134 INDUSTRIAL PARK ROAD  
GREENSBURG, PA 15601 SUITE 1700

### OTHER INFORMATION

TO MAKE THIS EVENT ENGAGING AND INTERACTIVE, WE ENCOURAGE YOU TO INCLUDE AN ACTIVITY THAT ATTENDEES CAN PARTICIPATE IN.



THIS WELLNESS  
EXPERIENCE WILL BRING  
PEOPLE AND CARING  
ORGANIZATIONS  
TOGETHER TO HELP  
SUPPORT, STRENGTHEN,  
AND EMPOWER  
INDIVIDUALS AND  
FAMILIES.

SCAN THE QR CODE  
TO REGISTER TODAY!

# Employee Spotlight

## April



Employee: Bryce Sallack  
Job Title: TCM - Lead

Q. How long have you been at WCSI?  
**3 and a half years**

Q. What is your favorite part of your job?  
**My favorite part is working with our clients and helping them fulfill themselves and their wishes.**

Q. What is your favorite thing or favorite memory about WCSI?  
**My favorite thing about WCSI is that everyone here always helps you. No one leaves questions unanswered or lets you down. No matter what, someone is going to help you through any sort of situation.**

Q. As a child, what did you want to be when you grew up?  
**When I was a kid I always wanted to be a construction worker for someone, don't know who, but someone.**

Q. What was your first job ever?  
**My first job was a laborer for the City of Dubois.**

Q. What led to you working in this field?  
**I honestly wasn't planning on working in this field. I was originally going to be a state police officer, but unfortunate events happened. I've found working over here the last couple of years that I do love this job.**

Q. What's the best advice you can give to someone who is just starting out in your field?  
**Do what you CAN do, don't be stressed whenever a situation where you physically can't help. Do your best, but don't stress.**

Q. What do you enjoy doing outside of work?  
**I love lifting, hunting, fishing, and football.**

Q. If you could learn to do anything, what would it be?  
**I would love to learn different ways to cook to create gourmet meals.**

IQ. What is your "happy place"?  
**My happy place is on a football field in my hometown of Dubois.**



# Employee Spotlight

## May

Employee: Jen Ianni  
Job Title: TCM Admissions  
Specialist Supervisor



Q. How long have you been at WCSI?  
**Over 19 Years.**

Q. What is your favorite part of your job?  
**Working with my amazing coworkers and being able to help individuals in the community every day.**

Q. What is your favorite thing or favorite memory about WCSI?  
**My favorite memories are all from our old Latrobe office with JB; if you know, you know!**

Q. As a child, what did you want to be when you grew up?  
**A Kindergarten Teacher.**

Q. What was your first job ever?  
**A Telemarketer.**

Q. What led to you working in this field?  
**Just knowing at a young age I wanted to help make a difference.**

Q. What's the best advice you can give to someone who is just starting out in your field?  
**It can be very challenging at the beginning, but stick with it. Every day is an opportunity to learn something new.**

Q. What do you enjoy doing outside of work?  
**I like to be outdoors and spend time with my family and friends.**

Q. If you could learn to do anything, what would it be?  
**Play piano.**

What is your "happy place"?  
**The beach**





# Employee Spotlight

## June



Employee: Nicolette Tartler  
Job Title: TCM Lead

Q. How long have you been at WCSI?

**I have been at WCSI since September of 2023**

Q. What is your favorite part of your job?

**My favorite part of my job is helping clients navigate challenges and recognizing their strengths as they work toward their goals. Being able to support, advocate for, and witness their growth is incredibly rewarding.**

Q. What is your favorite thing or favorite memory about WCSI?

**My favorite thing about WCSI would be the people that I work with, everyone is extremely helpful, very easy to talk to, and I have developed such great friendships since starting here!**

Q. As a child, what did you want to be when you grew up?

**I wanted to be a teacher.**

Q. What was your first job ever?

**My first job ever was being a cashier at Giant Eagle in high school!**

Q. What led to you working in this field?

**I was drawn to the mental health aspect of this field because I value supporting people through challenges while addressing the broader social factors that affect well-being. The combination of advocacy, human connection, and meaningful impact motivated me to pursue this field.**

Q. What's the best advice you can give to someone who is just starting out in your field?

**Don't be afraid to ask questions!! I would constantly reach out to my supervisor or other TCMs for guidance on how to handle situations, and there would always be someone to answer and assist.**

Q. What do you enjoy doing outside of work?

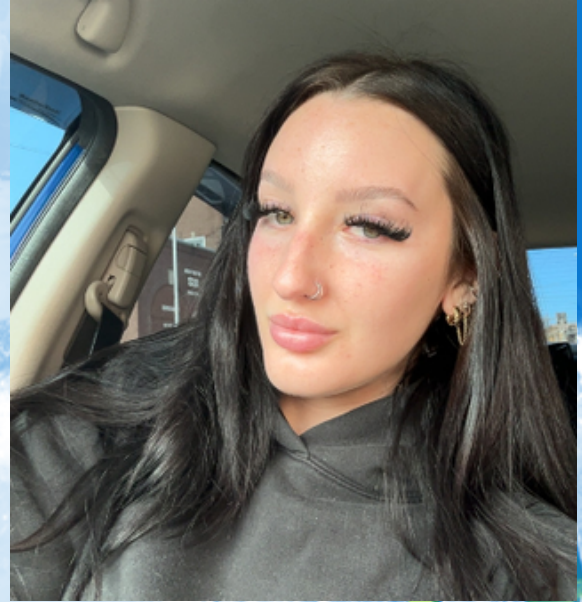
**I enjoy traveling, retail therapy, working out, and spending time with my family and friends!**

Q. If you could learn to do anything, what would it be?

**To be able to travel more and to learn/immerse myself into different cultures.**

Q. What is your "happy place"?

**Anywhere that involves a beach with clear water and a high UV index.**





**WCSI**  
Westmoreland  
Casemanagement  
and Supports, Inc.



**WE ARE** 

# HIRING

Join Our Team 

**WCSI OFFERS:**

- A dynamic environment to effectively utilize your skills.
- Ongoing training and development for maximum potential.
- Opportunities for valuable experience and career growth.
- Competitive salaries and generous benefits.
- Family-oriented employment with flexible work-life balance.



**OPEN POSITIONS**

Targeted Case Manager  
Supports Coordinator  
Criminal Justice Specialist/TCM

**APPLY NOW** 

Send Your Resume to:  
[WCSICareers@wcsi.org](mailto:WCSICareers@wcsi.org)



Phone Number  
**724-837-1808**



# Featured Resources



**This is your invitation to attend  
Westmoreland Food Bank's  
Mobile Market Distribution**

**Location: 1 Wendell Ramey Ln, Monessen (East  
Gate Parking Lot Area)**

**Date: April 13, 2026**

**Time: 1:30 pm -4:30 pm**

**Due to safety concerns**

**DO NOT ARRIVE BEFORE 12:30 pm**

***THIS IS A DRIVE-THRU DISTRIBUTION***

***\*2 ORDERS PER CAR MAXIMUM***

***\*All items are available WHILE SUPPLIES LAST***



**Monessen**

***CITY SCHOOL DISTRICT***

Do you love someone who is  
struggling with the use of  
**alcohol or drugs?**

**YOU ARE NOT ALONE!**  
**GET SUPPORT NOW.**



Supporting a loved one through addiction can be emotionally taxing. In our **CRAFT program**, we provide a supportive space where you can learn to set boundaries, practice self-care, and connect with others who understand.

### LOCATIONS





**GREENSBURG**  
Tuesdays at 6:00 pm  
316 Donohoe Rd.  
Greensburg, PA 15601

**NEW KENSINGTON**  
Thursdays at 5:00 pm  
Wesley Family Services  
1045 4th Ave.  
New Kensington, PA 15084

*\*Virtual Options Available*


*Join us on this  
journey towards  
healing and  
hope. Together,  
we're stronger.*

### VISIT OUR WEBSITE TO REGISTER OR CONTACT

 **Jamie Leventry**  
 **724-433-1347**  
 [jleventry@westmorelandca.org](mailto:jleventry@westmorelandca.org)  
 [www.westmorelandca.org](http://www.westmorelandca.org)



**Westmoreland  
Community  
Action**

 **OverdoseLifeline**

# Have you been affected by the recent withholding of SNAP benefits?

## PA CareerLink® Pittsburgh is here to help you

Due to the current unavailability of SNAP benefits, we've compiled a list of local resources to help support your food needs during this time.

### Food Resources

- <https://www.findhelp.org/>
- <https://www.pa211.org/food-resources/>
- <https://www.bigburgh.com/#/services/all/pantries-supplies/>
- <https://findfood.pittsburghfoodbank.org/s/>
- <https://412foodrescue.org/>

### Discover Upcoming Food Pantry & Distribution Events

Scan the QR code or visit <https://careerlinkpittsburgh.org/resources> to find out when and where you can access free food support in your community.



PA CareerLink® is an Equal Opportunity Employer/Program. Auxiliary Aides and services are available upon request. Requesting accommodations in advance helps to ensure that reasonable accommodations are available at the time service is provided.  
Toll-Free: 866-317-5627 Toll-Free TTY: 877-889-5621 TTY: 412-522-7044. Relay service: 711  
Pittsburgh and Allegheny County WIOA Programs are fully funded by federal dollars. See <https://www.partner4work.org/about/stevens-amendment/> for information.

- ☎ (412) 248 - JOBS (5627)
- 📍 [CareerLinkPittsburgh.org](https://www.CareerLinkPittsburgh.org)
- 📷 [PACareerLink\\_PG](#)H
- 📘 [PA CareerLink® Pittsburgh](#)
- ✂ [PACL\\_PG](#)H



LITC



SUMMIT  
LEGAL AID



LHWOC.ORG  
A BRIGHTER FUTURE



TAXPAYER  
ADVOCATE  
SERVICE

YOUR VOICE AT THE IRS

# FEDERAL TAX CLINIC

**FRIDAY, APRIL 10, 2026**

**10:00 AM TO 3:00 PM**

**Laurel Highlands Workforce &  
Opportunity Center  
310 Donohoe Road  
Greensburg, PA 15601**

**If you are a low-income taxpayer who:**

- Needs assistance in resolving a tax dispute with the IRS, and you cannot afford representation, or
- If you speak English as a second language and need help understanding your taxpayer rights and responsibilities




## WE MAY BE ABLE TO HELP!

- ✓ IRS Audits
- ✓ Appeals
- ✓ Tax collection matters
- ✓ Other federal tax disputes

## To Register:

 Call: (724) 836-2211

 Scan the QR Code with your smartphone



**Walk-ins will be accepted**



\*The LITC does not provide tax return preparation services.  
If you need assistance filing your return, we can assist in  
finding a Volunteer Income Tax Assistance (VITA) site near you.

[www.summitlegal.org](http://www.summitlegal.org)

**Click here to sign  
up for our  
mailing list on  
the homepage of  
our website!**

**Office Hours:**

8:30 AM-4:30 PM  
Monday through Friday

**Main Office:**

134 Industrial Park Road  
Suite 1700  
Greensburg, PA 15601  
Phone: 724-837-1808  
Fax: 724-858-9012

**Satellite Location:**

301 7th Street  
New Kensington, PA 15068  
Phone: 724-334-1774  
Fax: 724-334-3211

For more information, visit our website at [www.wcsi.org](http://www.wcsi.org).

Don't forget to like and follow us on Facebook and Instagram for more information on valuable resources, community events, and the good work we do!

Follow us on

**FACEBOOK**



 WestmorelandCasemanagement

Follow us on Instagram



eWestmorelandCasemanagement